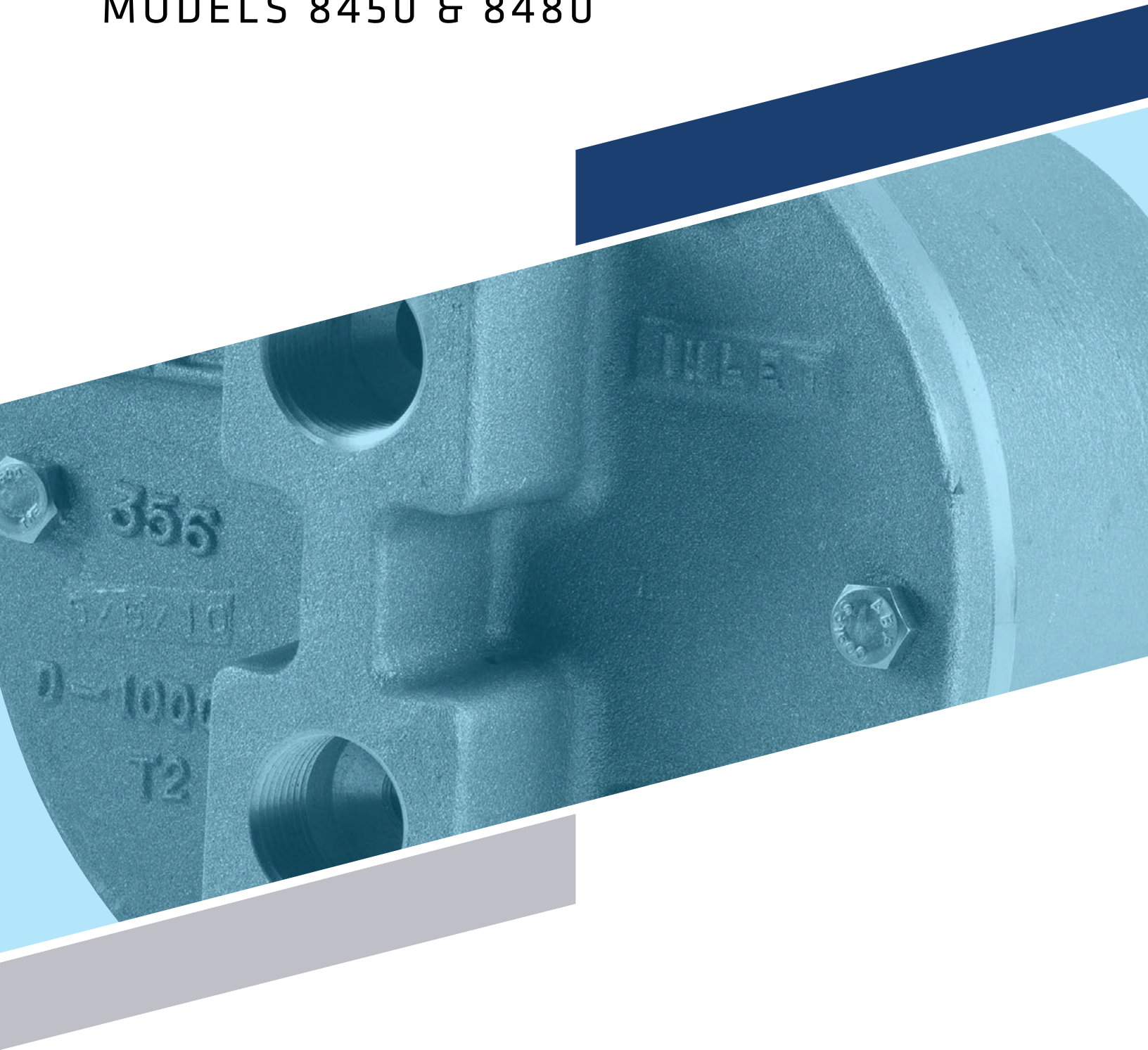




AUTOMATIC DRIP TRAP

MODELS 8450 & 8480



MODELS 8450 & 8480

Groth drip traps are easily attached to a Groth Sediment Trap for extra efficiency or for collection and safe removal of liquids from low points in gas control lines. The Groth Model 8450 is an automatic drip trap design with a unique float operated valve. Also available: Groth Model 8480 (automatic), for high pressure (up to 60 PSIG) operation.

Technical Details

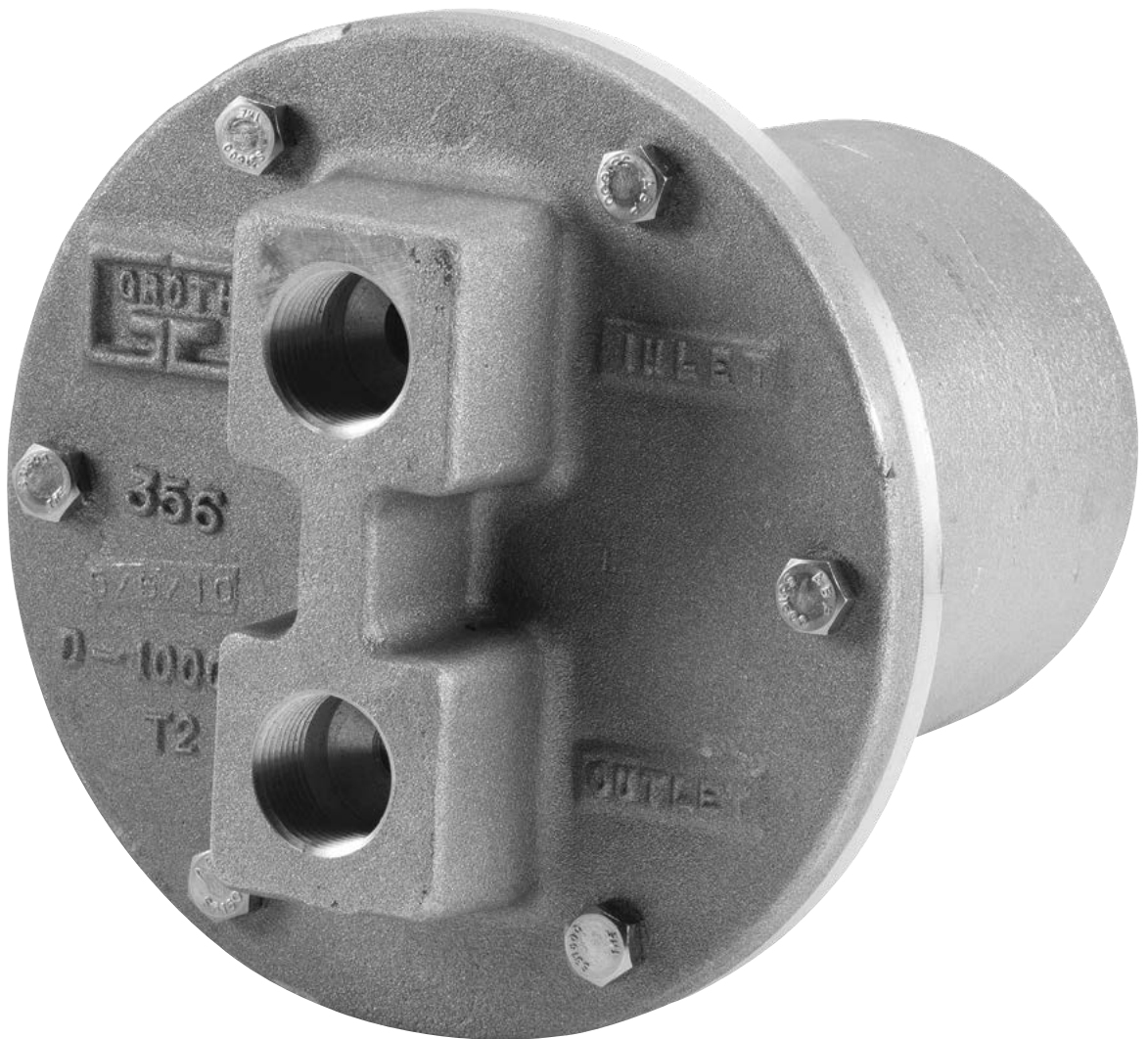
- Size: Standard with 1" NPT connection
- Material: Aluminum body with Stainless Steel internal working parts
- Maximum working pressure of 5 psig

Features

- Powerful, reliable shut-off action
- Unique float operated valve with self-aligning spherical seat
- Extra large discharge port reduces clogging
- Removable bowl design for easy maintenance
- Non-sticking fluoropolymer bearing
- ATEX Certified

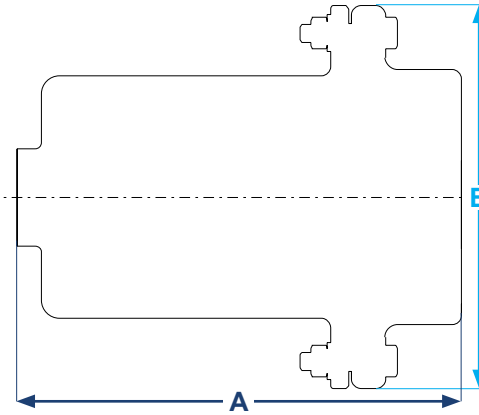
Options

- Insulation jacket



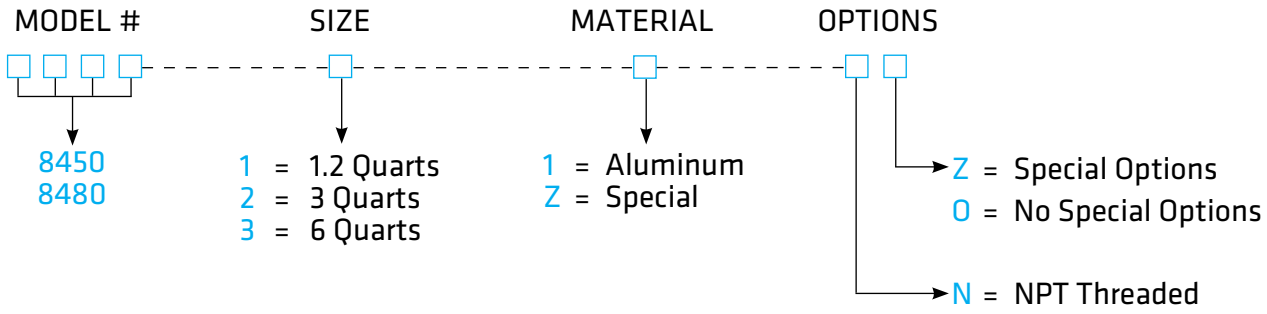
SPECIFICATIONS

Size Qt (liters)	A Height Inches (mm)	B Width Inches (mm)	Approx Ship. Weight Aluminum Lbs. (kg)
1.2 (1.1)	9.50 (241)	7.88 (200)	20 (9)
3 (2.8)	13 (330)	8.50 (206)	25 (11)
6 (5.7)	14 (356)	8.50 (206)	30 (14)



HOW TO ORDER

For easy ordering, select proper model numbers



NOTES

- For special options, consult factory

EXAMPLE

8 4 5 0 — 2 — 1 — N 0



GROTHCORP.COM