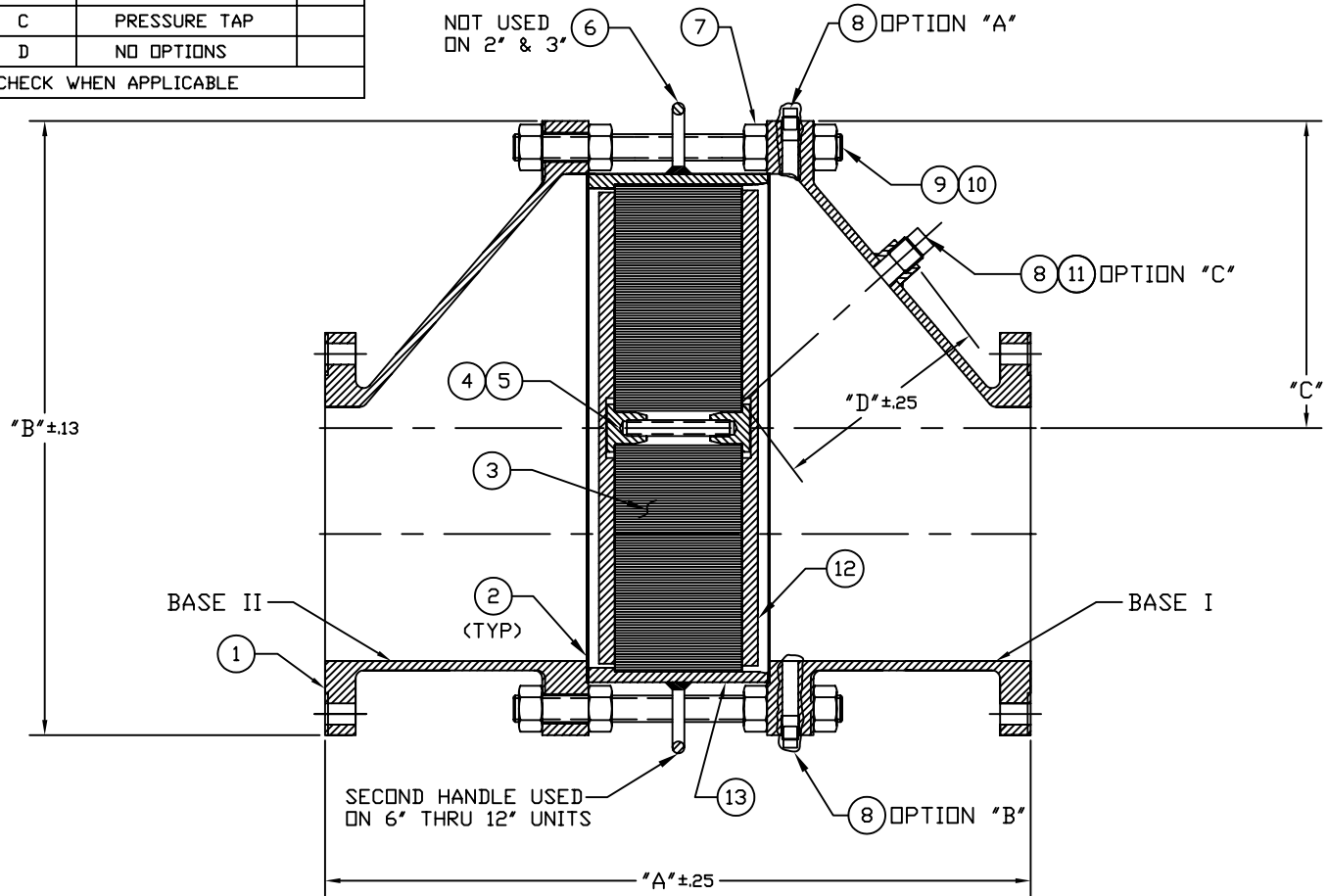


PORT CONNECTIONS			
BASE	LOCATION	DESCRIPTION	THD
	A	THERMOCOUPLE	
	B	DRAIN PORT	
	C	PRESSURE TAP	
	D	NO OPTIONS	
CHECK WHEN APPLICABLE			

MODEL 7628
HORIZONTAL
FLAME ARRESTER



NOTES:

- 1. SEE DWG C-92796 FOR ANSI 150 & ALTERNATE DRILLING PATTERNS.

INSTRUMENT & DRAIN PORT CONNECTION								
THRD SIZE	DRILL ϕ		OPT "A"	OPT "B"	OPT "C"			
	In.	mm						
1/4"-18 NPT	.438	11	2' - 12"	2' - 12"	2' - 12"			
1/2"-14 NPT	.703	18	2' - 12"	2' - 12"	2' - 12"			
3/4"-14 NPT	.906	23	6' - 12"	6' - 12"	2' - 12"			
1"-11 NPT	1.141	29	6' - 12"	6' - 12"	2' - 12"			
SIZE	A		B		C		D	
	In.	mm	In.	mm	In.	mm	In.	mm
2"	14.00	356	9.50	241	4.63	118	4.50	114
3"	16.00	406	11.00	279	5.31	135	5.75	146
4"	18.25	464	12.50	318	5.88	149	5.00	127
6"	21.00	533	16.50	419	7.75	197	5.75	146
8"	25.63	651	20.63	524	10.19	259	9.00	229
10"	30.00	762	25.25	641	11.88	302	9.75	248
12"	32.50	826	29.00	737	13.75	349	9.75	248

TAGS AND SPECIFICATIONS

THIS DRAWING EMBODIES A CONFIDENTIAL PROPRIETARY DESIGN ORIGINATED BY GROTH CORPORATION, AND ALL DESIGN, MANUFACTURING, REPRODUCTION, USE AND SALE RIGHTS, REGARDING THE SAME ARE EXPRESSLY RESERVED. IT IS SUBMITTED UNDER A CONFIDENTIAL RELATIONSHIP FOR A SPECIFIED PURPOSE, AND THE RECIPIENT AGREES BY ACCEPTING THIS DRAWING NOT TO SUPPLY OR DISCLOSE ANY INFORMATION REGARDING IT TO ANY UNAUTHORIZED PERSONS OR TO INCORPORATE IN OTHER PROJECTS ANY SPECIAL FEATURES PECULIAR TO THIS DESIGN. ALL PATENTS RIGHTS HERETO ARE EXPRESSLY RESERVED BY GROTH CORPORATION, 1202 HAHLO, HOUSTON, TEXAS 77020

REV.	DATE	BY	ECN NO.
B	01-23-97	ESQ	97013
C	06-20-97	ESQ	97059
D	07-18-97	MC	97070
E	08-16-99	MP	99094
F	08-23-01	MP	10276
G	06-04-02	ESQ	10397
H	11-05-02	ESQ	10492

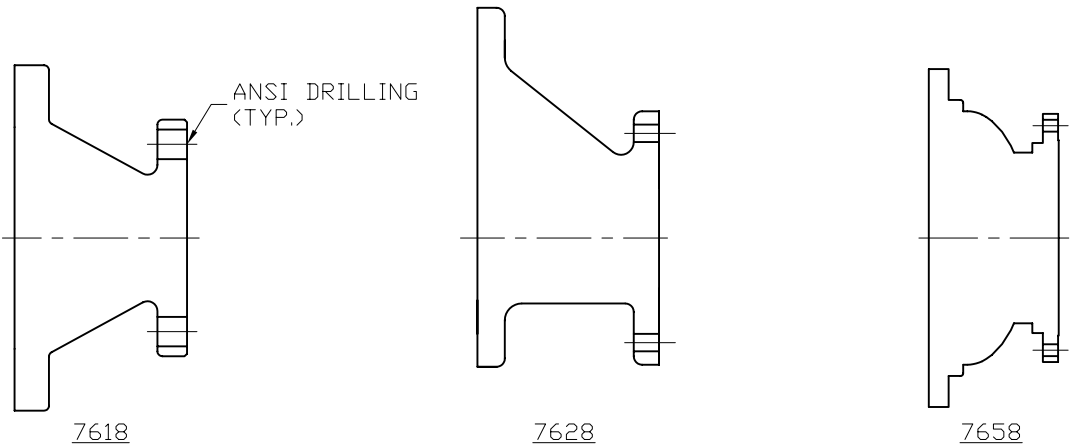


GROTH CORPORATION
a Continental Disc Company

APPROVED BY:	CHECKED BY:	DWG. NO. : C-84599
DATE:	DATE:	DWN BY: ES QUINTERO

NOTE: (1.) MODEL 7658A IS ONLY MODEL AVAILABLE WITH 1" FLANGE CONNECTION.

FLAME ARRESTER
FLANGE DRILLING DIMENSION TABLES
ANSI/CLASS 150 & ALTERNATE DRILLING



DRILLED HOLE PATTERNS

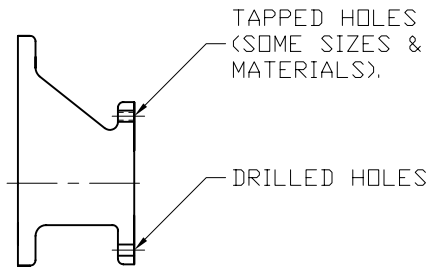
SIZE	FLANGE DRILLING	HOLE DIA.		NO. OF HOLES	BOLT CIRCLE DIA.	
		in	mm		in	mm
1"	ANSI 150	.63	16	4	3.13	80
2"	ANSI 150	.75	19	4	4.75	121
3"	ANSI 150	.75	19	4	6.00	152
4"	ANSI 150	.75	19	8	7.50	191
6"	ANSI 150	.88	22	8	9.50	241
8"	ANSI 150	.88	22	8	11.75	298
10"	ANSI 150	1.00	25	12	14.25	362
12"	ANSI 150	1.00	25	12	17.00	432
14"	ANSI 150	1.13	29	12	18.75	476
16"	ANSI 150	1.13	29	16	21.25	540
18"	ANSI 150	1.25	32	16	22.75	578
20"	ANSI 150	1.25	32	20	25.00	635
24"	ANSI 150	1.38	35	20	29.50	749
30"	CLASS 150	.88	22	44	33.31	846
36"	CLASS 150	1.00	25	44	39.75	1010

SIZE	FLANGE DRILLING	HOLE DIA.		TAPPED HOLE	NO. OF HOLES	BOLT CIRCLE DIA.	
		in	mm			in	mm
1"	JIS 10K	.75	19	M16 x 2.0-6H	4	3.54	90
2"	JIS 10K	.75	19	M16 x 2.0-6H	4	4.72	120
3"	JIS 10K	.75	19	M16 x 2.0-6H	8	5.91	150
4"	JIS 10K	.75	19	M16 x 2.0-6H	8	6.89	175
6"	JIS 10K	.91	23	M20 x 2.5-6H	8	9.45	240
8"*	JIS 10K	.91	23	M20 x 2.5-6H	12	11.42	290
10"*	JIS 10K	.98	25	M22 x 2.5-6H	12	13.98	355
12"*	JIS 10K	.98	25	M22 x 2.5-6H	16	15.75	400

* NOT APPLICABLE TO 7658A

SIZE	FLANGE DRILLING	HOLE DIA.		TAPPED HOLE	NO. OF HOLES	BOLT CIRCLE DIA.	
		in	mm			in	mm
1"	PN 10	.55	14	M12 x 1.75-6H	4	3.35	85
2"	PN 10	.71	18	M16 x 2.0-6H	4	4.92	125
3"	PN 10	.71	18	M16 x 2.0-6H	8	6.30	160
4"	PN 10	.71	18	M16 x 2.0-6H	8	7.09	180
6"	PN 10	.87	22	M20 x 2.5-6H	8	9.45	240
8"*	PN 10	.87	22	M20 x 2.5-6H	8	11.61	295
10"*	PN 10	.87	22	M20 x 2.5-6H	12	13.78	350
12"*	PN 10	.87	22	M20 x 2.5-6H	12	15.75	400

* NOT APPLICABLE TO 7658A



SIZE	FLANGE DRILLING	HOLE DIA.		TAPPED HOLE	NO. OF HOLES	BOLT CIRCLE DIA.	
		in	mm			in	mm
1"	PN 16	.55	14	M12 x 1.75-6H	4	3.35	85
2"	PN 16	.71	18	M16 x 2.0-6H	4	4.92	125
3"	PN 16	.71	18	M16 x 2.0-6H	8	6.30	160
4"	PN 16	.71	18	M16 x 2.0-6H	8	7.09	180
6"	PN 16	.87	22	M20 x 2.5-6H	8	9.45	240
8"	PN 16	.87	22	M20 x 2.5-6H	12	11.61	295
10"	PN 16	1.02	26	M24 x 3.0-6H	12	13.98	355
12"	PN 16	1.02	26	M24 x 3.0-6H	12	16.14	410

THIS DRAWING EMBODIES A CONFIDENTIAL PROPRIETARY DESIGN ORIGINATED BY GROTH CORPORATION, AND ALL DESIGN, MANUFACTURING, REPRODUCTION, USE AND SALE RIGHTS, REGARDING THE SAME ARE EXPRESSLY RESERVED. IT IS SUBMITTED UNDER A CONFIDENTIAL RELATIONSHIP FOR A SPECIFIED PURPOSE, AND THE RECIPIENT AGREES BY ACCEPTING THIS DRAWING NOT TO SUPPLY OR DISCLOSE ANY INFORMATION REGARDING IT TO ANY UNAUTHORIZED PERSONS OR TO INCORPORATE IN OTHER PROJECTS ANY SPECIAL FEATURES PECULIAR TO THIS DESIGN. ALL PATENTS RIGHTS HERETO ARE EXPRESSLY RESERVED BY GROTH CORPORATION, 13650 N. PROMENADE, STAFFORD, TEXAS 77477

REV.	DATE	BY	ECN NO.
A	05/29/02	MP	10390



GROTH CORPORATION
a Continental Disc Company

APPROVED BY:	CHECKED BY:	DWG. NO. : C-92796
DATE:	DATE:	DWN BY: MP

MODEL 7628

BILL OF MATERIAL

ITEM	DESCRIPTION	STANDARD MATERIALS OF CONSTRUCTION			OPTIONAL FEATURES
		ALUMINUM <input type="checkbox"/>	CS <input type="checkbox"/>	316 SS <input type="checkbox"/>	<input type="checkbox"/>
1	BASE	ALUM GR 356 T6	CS WCB	CF-8M (316 SS)	
2	* GASKET	NON-ASB	NON-ASB	NON-ASB	
3	ELEMENT, FLAME	ALUM (1)	316 SS	316 SS	
4	PLUG, ELEMENT	SS	SS	303 SS	
5	ROD, ELEMENT	SS	SS	316 SS	
6	HANDLE	ALUM	CS	SS	
7	NUT, SPREADER (HEX)	SS	SS	SS	
8	PLUG, PLUG (OPTIONAL)	ALUM	CS	316 SS	
9	NUT, HEX	SS	SS	SS	
10	STUD	SS	SS	SS	
11	COUPLING (OPTIONAL)	ALUM	CS	316 SS	
12	GRID, ELEMENT	ALUM	316 SS	316 SS	
13	HOUSING, ELEMENT	ALUM	CS	316 SS	

* SPARE PARTS

(1) Available in 316 SS

DWG. NUMBER:
BOM NUMBER:

C-84599
84599.BOM Rev. A

